

Keysight 16860A Series Portable Logic Analyzers

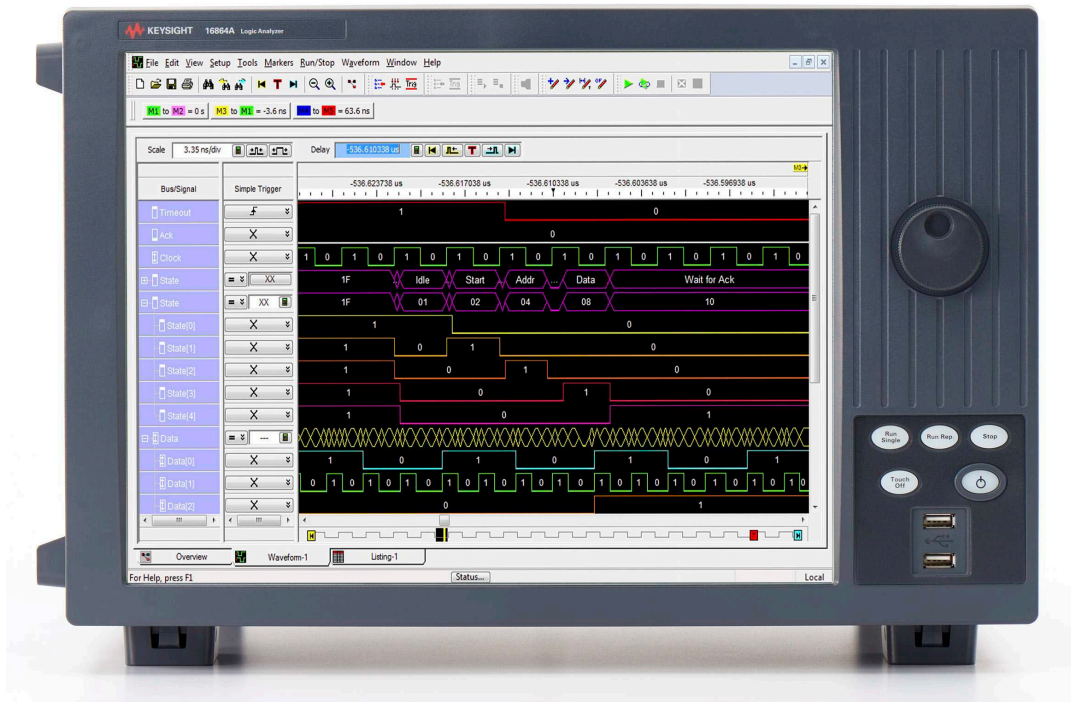
Data Sheet



Unlocking Measurement Insights

www.valuetronics.com

Introduction



Keysight's 16860A Series is the industry's highest-performance portable logic analyzer – providing you the best insight so you can solve your toughest digital debug challenges.

- High-speed state and timing with deep memory – Capture the most system activity (up to 128 Mb) at the highest resolution to identify the root cause of a problem and symptom widely separated in time
- Signal integrity – Quickly identify problem signals with simultaneous eye diagrams on all channels
- Probing and application support – Customize a system for your specific needs with a comprehensive set of probing options and application-specific software
- Upgradable – Purchase the capability you need now, then upgrade as your needs evolve

Models	16861A	16862A	16863A	16864A
Channels	34	68	102	136
Max timing sample rate	2.5 GHz full channel/5.0 GHz half channel			
Quarter channel timing sample rate	—	10 GHz (Option T10)	—	10 GHz (Option T10)
Max state clock rate	350 MHz standard, 700 MHz (Option 700)			
Maximum state data rate	700 Mb/s standard, 1400 Mb/s (Option 700)			
Timing zoom	12.5 GHz at 256 K deep			
Memory depth	2 Mb standard; 4 Mb, 8 Mb, 16 Mb, 32 Mb, 64 Mb, 128 Mb optional (2x in half-channel timing, 4x in quarter-channel timing)			
Probe/signal compatibility	U4200A Series single-ended direct connect probes, 90-pin single-ended and differential probes			

Identify Problem Signals on All Channels Simultaneously

As timing and voltage margins continue to shrink, confidence in signal integrity becomes an increasingly vital requirement in the design validation process. Eye scan lets you acquire signal integrity information on all the buses in your design (and under a wide variety of operating conditions) in a matter of minutes. Identify problem signals quickly for further investigation with an oscilloscope. Results can be viewed for each individual signal or as a composite of multiple signals or buses.

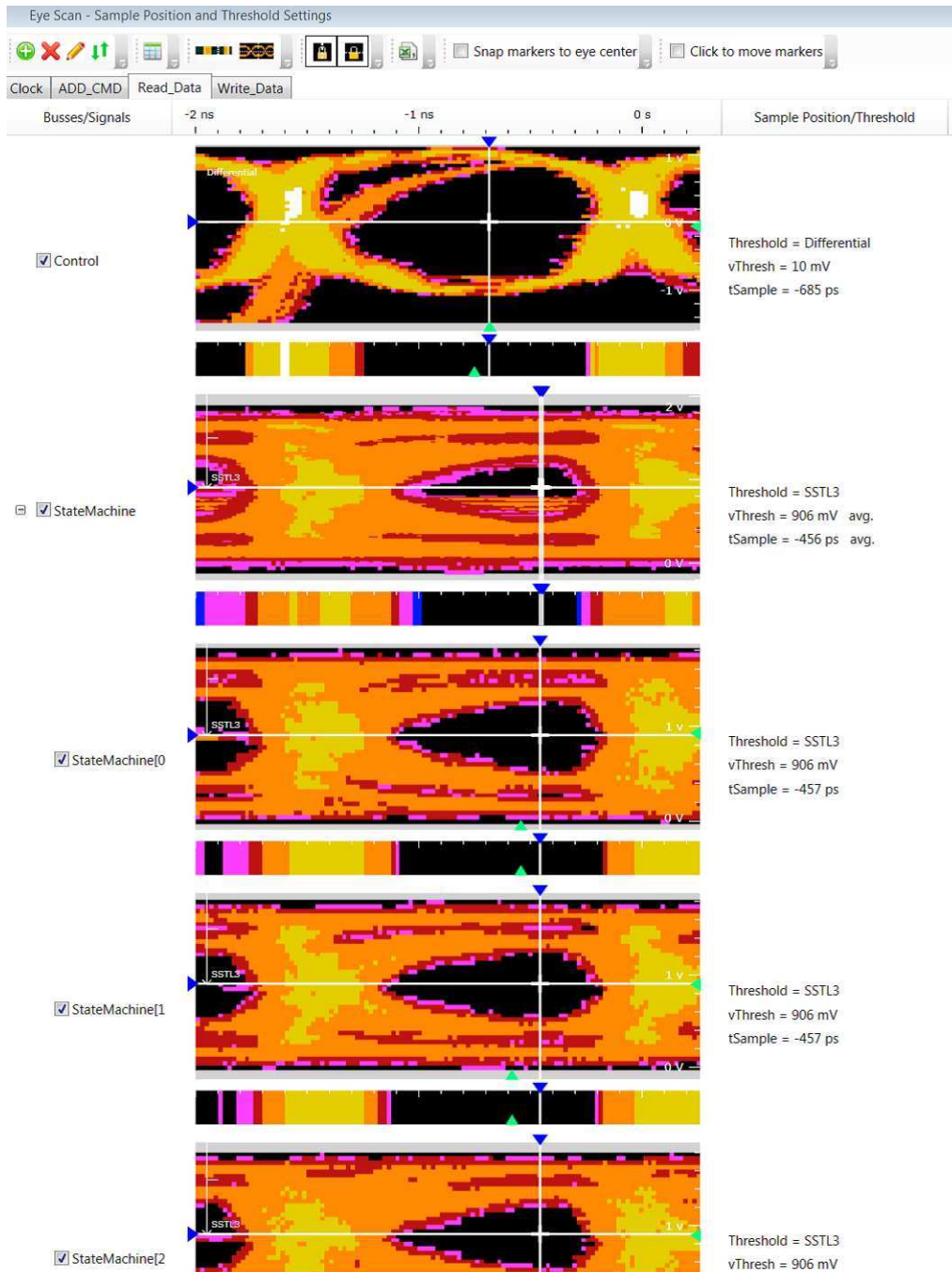


Figure 1. Eye scan automatically sets sample positions for accurate state capture and also provides a signal integrity view of each input signal, without the need for an oscilloscope.

Unleash the Power of a Logic Analyzer Plus an Oscilloscope

Seamless oscilloscope integration with View Scope

Easily make time-correlated measurements between Keysight logic analyzers and oscilloscopes. The time-correlated logic analyzer and oscilloscope waveforms are integrated into a single logic analyzer waveform display for easy viewing and analysis. You can also trigger the oscilloscope from the logic analyzer (or vice versa); automatically de-skew the waveforms; and maintain marker tracking between the two instruments. View Scope allows you to perform the following more effectively:

- Validate signal integrity
- Track down problems caused by signal integrity
- Validate correct operation of A/D and D/A converters
- Validate correct logical and timing relationships between the analog and digital portions of a design

Connection

The Keysight logic analyzer and oscilloscope can be physically connected with standard BNC and LAN connections. Two BNC cables are connected for cross triggering, and the LAN connection is used to transfer data between the instruments. The View Scope correlation software is standard in the logic analyzer's application software.

The View Scope software includes:

- Ability to import some or all of the captured oscilloscope waveforms
- Auto scaling of the scope waveforms for the best fit in the logic analyzer display

Feature	Benefit
Automated setup	Quickly get to your first measurement by using the logic analyzer's Help wizard for easy setup, regardless of which supported Keysight oscilloscope you connect to.
Integrated waveform display	Instantly validate the logical and timing relationships between the analog and digital portions of your design. View oscilloscope and logic analyzer waveforms integrated into a single logic analyzer waveform display.
Automatic measurement de-skew	Save time and gain confidence in measurement results with measurements that are automatically de-skewed in time.
Cross trigger the logic analyzer and oscilloscope	Start your debug approach from either the analog or digital domain with the flexibility to trigger the oscilloscope from the logic analyzer (or vice versa).
Tracking markers	Precisely relate information on the oscilloscope's display to the corresponding point in time on the logic analyzer display with tracking markers. The oscilloscope's time markers automatically track adjustments of the logic analyzer's global markers.

Debug, Verify, and Optimize DDR, LPDDR, and ONFi Memory Systems

The 16860A Series logic analyzers, in conjunction with memory specific probing solutions and B4661A Memory Analysis Software, provide a cost-effective platform for debugging, verifying and optimizing memory designs operating at ≤ 1400 MT/s. You can get a comprehensive view into your system's memory operation with bus decode, transaction overview, compliance testing and performance analysis.

The 16860A Series supports Add/Cmd/Data state mode measurements for the following DDR and LPDDR memory families. For higher speed or channel count DDR/2/3, LPDDR/2/3, DDR4 and LPDDR4 memory applications, refer to Keysight's U4164A logic analyzer module which is designed specifically for high-speed memory applications.

Supported memory device speeds for 16860A Series logic analyzers				
Memory family	Memory device clock rate	Memory device data rate	Required state speed option	
			350 MHz clock standard	700 MHz clock Option 700
DDR	< 350 MHz	< 700 Mb/s	√	√
DDR2	< 350 MHz	< 700 Mb/s	√	√
DDR3	< 700 MHz	< 1400 Mb/s		√
LPDDR	< 350 MHz	< 700 Mb/s	√	√
LPDDR2	< 700 MHz	< 1400 Mb/s		√
LPDDR3	< 700 MHz	< 1400 Mb/s		√

In addition, the 2.5 GHz timing mode provides a 3:1 ratio of sample rate to data rate so you can perform timing measurements on DDR/LPDDR devices with < 400 MHz clock rate/ < 800 Mb/s data rate. When a 16862A or 16864A logic analyzer is configured with the 10 GHz quarter channel timing option, the analyzer is capable of capturing Open NAND Flash Interface (ONFi) traffic. Analysis of captured ONFi traffic is provided through the Performance Analysis option (4FP/4NP/4TP) of the B4661A Memory Analysis Software.

Get Instant Insight into your Design with Multiple Views and Analysis Tools

When you want to understand what your target is doing and why, you need acquisition and analysis tools that rapidly consolidate data and provide insight into your system's behavior.

Optional analysis and automated measurement packages

B4601C	Serial to parallel analysis package. This general purpose software enables easy viewing and analysis of serial data by converting it into a parallel format, thereby eliminating the tedious, time-consuming, and error-prone task of sifting through thousands of captured 1's and 0's.
B4602A	Signal extractor tool. This tool processes input signals and based on xml algorithms and creates a mapping of captured signals into new bus and signal names.
B4610A	Data import package. Use the logic analyzer GUI to view data obtained from tools other than a logic analyzer.
B4655A B4656A	FPGA dynamic probe application software for Xilinx (B4655A) and Altera (B4656A). The FPGA dynamic probe provides unprecedented visibility into your FPGA's internal activity. Make incremental real-time measurements in seconds without stopping the FPGA, changing the design or modifying design timing. Quickly set up the logic analyzer with automatic pin mapping and signal bus naming by leveraging the work you did in your design environment.
B4661A	Memory Analysis Software for logic analyzers. This package includes standard and optional licensed software. Standard features are always available for use. Optional licensed features require the purchase of a license to enable the full functionality of the option. Options include: <ul style="list-style-type: none"> - DDR decoder with physical address trigger tool - LPDDR decoder - DDR and LPDDR compliance violation analysis - DDR3/4 and LPDDR2/3/4 performance analysis
89601B-300	Digital vector signal analysis software, hardware connectivity for logic analyzers. Perform time-domain, spectrum and modulation quality analysis on digital baseband and IF signals with Keysight's 89600 Vector Signal Analysis software, running on the logic analyzer. www.keysight.com/find/dvsa

16860A Series Logic Analyzer Specifications and Characteristics

State (synchronous) sampling mode

	16861A	16862A	16863A	16864A
Channels	34 (32 data and 2 clock)	68 (64 data and 4 clock)	102 (96 data and 6 clock)	136 (128 data and 8 clock)
Sampling option: Single clock				
Clock (clock is on Pod 1)	1	1	1	1
Clock qualifiers	1	3	4	4
Reset qualifier	0	0	0	1
Sampling option: Multiple clocks				
Clocks or clock qualifiers	2	4	4	4
Reset qualifier	0	0	0	0

Clock channels can be used as data channels.

The state sampling clock mode specifies how the clock inputs are used for sampling. The availability of these state sampling clock modes depends on the state sampling option that you select.

- **Master** - All pods sampled by the master clock definition.
 - In single clock mode, only the clock signal on Pod 1 can be used.
 - In multiple clocks, either a single clock signal can be used or a combination of clocks can be used.
- **Dual sample** - In the dual sample clock mode, you can capture two samples per clock edge with two different threshold offsets and separate sampling positions. These separate threshold offsets and sampling positions allow you to set independent thresholds and sampling positions for Read and Write in DDR/LPDDR captures and for Rising and Falling edge in general-purpose data captures.
- **Master/slave** - Master pod is sampled on master clock and slave pod is sampled on slave clock, but the captured data of both slave and master clocks is saved together when the master clock occurs.
- **Demux** - Data being probed by one pod is demultiplexed into the logic analyzer memory that is normally used for two pods. The demultiplex mode uses the master and slave clocks to demultiplex the data.

	350 MHz (Base configuration)	700 MHz (Option 700)	350 MHz (Base configuration)
Sampling option	Single clock	Single clock	Multiple clocks
Available clock modes	Master	Master	Master
	Dual sample	Dual sample	Master/slave
			Demux
Maximum state data rate (spec) ¹	Captures data up to 350 Mbps on either edge of a clock up to 350 MHz	Captures data up to 700 Mbps on either edge of the clock up to 700 MHz	Captures data up to 700 Mbps on any combination of multiple clocks up to 350 MHz
	Captures data up to 700 Mbps on both edges of a clock up to 350 MHz	Captures data up to 1400 Mbps on both edges of the clock up to 700 MHz	
Maximum state clock frequency	350 MHz	700 MHz	350 MHz
Minimum state clock frequency	12.5 MHz (single edge), 6.25 MHz (both edges)	12.5 MHz (single edge), 6.25 MHz (both edges)	0 MHz
Minimum time between active clock edges	1430 ps	715 ps	1430 ps
Maximum trigger sequencer speed	700 MHz	1400 MHz	700 MHz

1. Specification (spec): Represents warranted performance of a calibrated instrument that has been stored for a minimum of 2 hours within the operating temperature range of 5 to 40 °C, unless otherwise stated, and after a 45-minute warm-up period. The specifications include measurement uncertainty.

16860A Series Logic Analyzer Specifications and Characteristics (Continued)

State mode functional characteristics

	Single clock	Multiple clocks
Minimum setup time	80 ps	250 ps
Minimum hold time	80 ps	250 ps
Minimum data valid window	160 ps	500 ps
Sample position adjustment range	7 ns typical	12 ns typical
Sample position adjustment resolution	20 ps typical	80 ps typical
Minimum state clock pulse width	Single edge: 200 ps	Single edge: 250 ps
Clock qualifier setup time	200 ps	250 ps
Clock qualifier hold time	200 ps	250 ps
RESET clock qualifier setup time	2 ns	N/A
RESET clock qualifier hold time	0 ps	N/A
Minimum slave to master clock time	N/A	350 ps
Minimum master to slave clock time	N/A	150 ps
Minimum slave to slave clock time	N/A	1.43 ns
Time tag resolution	80 ps	80 ps
Maximum time count between stored states	66 days	66 days
Maximum trigger sequence steps	8	16
Trigger sequence step branching	Arbitrary 4-way if/then/else	Arbitrary 4-way if/then/else
Trigger position	Start, center, end or user-defined	Start, center, end or user-defined
Trigger resources	<ul style="list-style-type: none"> - 16 patterns evaluated as =, !=, >, >=, <, <= - 8 double-bounded ranges evaluated as in range, not in range - 4 edge detectors in timing, 3 in transitional timing - 1 occurrence counter per sequence level - 1 timer - 4 flags - 1 arm in - Burst patterns - Event counters - 2 	<ul style="list-style-type: none"> - 16 patterns evaluated as =, !=, >, >=, <, <= - 8 double-bounded ranges evaluated as in range, not in range - 4 edge detectors in timing, 3 in transitional timing - 1 occurrence counter per sequence level - 3 timers - 4 flags - 1 arm in - Global counters - 2
Maximum occurrence counter	999,999,999	999,999,999
Maximum range width	64 bits	64 bits
Maximum pattern width	128 bits single label	128 bits single label
Timer range	200 sample clock period to 27 hours	100 ns to 27 hours
Timer resolution	5 ns	5 ns
Timer accuracy	$\pm (8 \text{ sample clock period} + 2 \text{ ns} + 0.01\%)$	$\pm (8 \text{ sample clock period} + 2 \text{ ns} + 0.01\%)$
Timer reset latency	80 sample clock period	80 sample clock period

16860A Series Logic Analyzer Specifications and Characteristics (Continued)

Timing (asynchronous) sampling mode

Feature	Full channel	Half channel	Quarter channel (Optional on 16862A or 16864A, requires options -700 and -T10)
Max sample rate	2.5 GHz	5.0 GHz	10 GHz
Sample period	400 ps to 10 ns	200 ps	100 ps
Memory depth	Up to 128 M	Up to 256 M	Up to 512 M

Timing mode functional characteristics

Minimum data pulse width	1 sample period + 200 ps
Timing interval accuracy	
– Within a 16 channel pod	$\pm (1 \text{ sample period} + 130 \text{ ps} + 0.01\% \text{ of time interval reading})^1$
– Across 16 channel pods	$\pm (1 \text{ sample period} + 400 \text{ ps} + 0.01\% \text{ of time interval reading})^1$
Maximum trigger sequencer speed	2.5 GHz
Maximum trigger sequence steps	8
Trigger sequence step branching	Arbitrary 4-way if/then/else
Trigger position	Start, center, end or user-defined
Trigger resources	16 patterns evaluated as =, !=, >, >=, <, <=
	8 double-bounded ranges evaluated as in range, not in range
	4 edge detectors in timing, 3 in transitional timing
	1 occurrence counter per sequence level
	1 timer
	4 flags
	1 arm in
	Burst trigger
	2 event counters
Trigger resource conditions	Arbitrary Boolean combinations
Trigger actions	Go to
	Trigger and fill memory
	Trigger and go to
	Trigger, send e-mail and fill memory
	Occurrence counter reset
Flag actions	Set
	Clear
	Pulse set
	Pulse clear
Maximum occurrence counter	999,999,999
Maximum range width	64 bits
Maximum pattern width	128 bits single label
Timer range	200 sample clock period to 27 hours
Timer resolution	5 ns
Timer accuracy	$\pm (8 \text{ sample clock period} + 2 \text{ ns} + 0.01\%)$
Timer reset latency	80 sample clock period

Timing zoom (Captured simultaneously with timing or state sampling mode capture)

Timing analysis sample rate	12.5 GHz (80 ps sample resolution)
Timing interval accuracy	
– Within a 16 channel block	$\pm (80 \text{ ps} + 130 \text{ ps} + 0.01\% \text{ of time interval reading})$
– Between 16 channel blocks	$\pm (80 \text{ ps} + 400 \text{ ps} + 0.01\% \text{ of time interval reading})$
Memory depth	256 K samples
Trigger position	Start, center, end or user-defined
Minimum data pulse width	1 sample period + 200 ps

1. With single-ended flying lead and Soft Touch Pro probes.

16860 Series Instrument Characteristics

Standard data views	
Waveform	Integrated display of data as digital waveforms, analog waveforms imported from an external oscilloscope, and/or as a chart of a bus' values over time
Listing	Displays data as a state listing
Compare	Compares data from different acquisitions and highlights differences
Source code	Displays time-correlated source code and inverse assembly simultaneously in a split display Define the trigger event by simply clicking on a line of source code Obtain source-code-level views of dynamically loaded software or code moved from ROM to RAM during a boot-up sequence using address offsets Requires access to source files via the LAN or instrument hard drive to provide source code correlation Source correlation does not require any modification or recompilation of your source code
Eye scan	Displays eye diagrams across all buses and signals simultaneously, allowing you to identify problem signals quickly
Data display	
Numeric bases for data display	Binary, hex, octal, decimal, signed decimal (two's complement), ASCII, symbols and processor mnemonics
Symbolic support/object file format compatibility	
Number of symbols/ranges	Unlimited (limited only by amount of virtual memory available on 16860 Series logic analyzers)
Object file formats supported	IEEE-695, Aout, Omf86, Omf96, Omf386, Sysrof, ELF/DWARF1 ¹ , ELF/DWARF2 ¹ , ELF/Stabs1, ELF/Stabs2, ELF/Mdebug Stabs, TICOFF/COFF, TICOFF/Stabs
ASCII	GPA (general purpose ASCII)
User-defined symbols	Specify a mnemonic for a given bit pattern for a label or bus
Available data/file formats	
ala	Contains information to reconstruct the display appearance, instrument settings and trace data (optional) that were present when the file was created
xml	Extensible markup language for configuration portability and programmability
csv	CSV (comma-separated values) format for transferring data to other applications like Microsoft Excel
alb	Export logic analyzer data for post-processing. Alb data (module binary format) can be parsed using programming tools
Standard analysis tools	
Filter/colorize	Show, hide or color certain samples in a trace for easier identification and analysis
Find (next/previous)	Locate specific data/events in a captured trace

1. Supports C++ name de-mangling.

16860 Series Instrument Characteristics (Continued)

16860A Series PC characteristics	
Operating system	Microsoft Windows 7 embedded (64-bit)
Processor	3 GHz Intel i5 quad core processor
Chipset	Intel Q77
System memory	8 GB
Removable SSD	256 GB
Installed on SSD	Operating system, latest revision of the logic and protocol application software, optional application software ordered with the logic analyzer
16860A Series instrument controls	
LCD touch-screen display	Large 38.1-cm (15-in.) touch-screen display makes is easy to view a large number of waveforms or states
Front-panel hot keys	Dedicated hot keys for selecting run mode and disabling touch screen
Front-panel knob	General-purpose knob adjusts viewing and measurement parameters
Keyboard and mouse	USB keyboard and USB mouse
16860A Series video display modes	
Touch-screen display standard	Size: 38.1-cm (15-in.)
	Resolution: 1024 x 768
External display	Simultaneous display capability; Front panel and external

Programmability

You can write programs to control the logic analyzer application from remote computers on the local area network using COM. The COM automation server is part of the logic analyzer application. This software allows you to write programs to control the logic analyzer. All measurement functionality is controllable via the COM interface.

The remote programming interface works through the COM automation objects, methods and properties provided for controlling the logic analyzer application.

16860A Series Interfaces

Peripheral interfaces	
Display	One 15-pin XGA connector and one DisplayPort connector
Audio ports	Line in, line out, mic in
USB ports	Two 3.0 ports on rear, two 2.0 ports on front, two 2.0 ports on rear
Connectivity interfaces	
LAN	10Base-T, 100Base-T, 1000Base-T
Connector	RJ-45
Interface with external instrumentation	
Trigger or arm external devices or receive signals that can be used to arm measurement hardware within the logic analyzer with trigger in/out	
Trigger in	
Input	Rising edge or falling edge
Action taken	When received, the logic analyzer takes the actions described in the trigger sequence step
Input signal level	± 6 V max
Threshold level	Selectable: ECL, LVPECL, LVTTTL, PECL, TTL User defined (± 5 V in 50 mV increments)
Minimum signal amplitude	200 mV
Connector	BNC
Input resistance	3.2 k Ω nominal
Trigger out	
Trigger	Select one event from the following as the trigger out event: logic analyzer trigger, flag 1, flag 2, flag 3 or flag 4
Mode	Feedthrough
Polarity	Active high
Output signal	VOH (output high level) 2.0 V min VOL (output low level) 0.5 V max
Signal load	50 Ω (For good signal quality, the trigger out signal should be terminated in 50 Ω to ground)
Connector	BNC
External reference clock in	
	10 MHz \pm 0.01%
Signal swing	Minimum 200 mVp-p swing, Maximum 5 Vp-p swing
Connector	BNC

16860A Series Physical Characteristics

Dimensions	
16861A, 16862A, 16863A, 16864A	Height 291.57 mm (11.48 in)
	Width 450.65 mm (17.74 in) Add 1.25 inches to the width to account for probes that plug into the right side of the instrument
	Depth 456.54 mm (17.97 in)
Power	
16861A	100 to 120 V \pm 10%, 50/60/400 Hz 100 to 240 V \pm 10% 50/60 Hz 325 W max
16862A	100 to 120 V \pm 10%, 50/60/400 Hz 100 to 240 V \pm 10% 50/60 Hz 325 W max
16863A	100 to 120 V \pm 10%, 50/60/400 Hz 100 to 240 V \pm 10% 50/60 Hz 325 W max
16864A	100 to 120 V \pm 10%, 50/60/400 Hz 100 to 240 V \pm 10% 50/60 Hz 325 W max

Weight	Max net	Max shipping
16861A	12.5 kg (27.6 lbs)	23.3 kg (51 lbs)
16862A	12.5 kg (27.6 lbs)	23.3 kg (51 lbs)
16863A	12.5 kg (27.6 lbs)	23.3 kg (51 lbs)
16864A	12.5 kg (27.6 lbs)	23.3 kg (51 lbs)

Instrument operating environment	
Temperature	Operating 5 °C to 40 °C Non-operating -40 °C to +65 °C
Humidity	Operating up to 90% relative humidity (non-condensing) at 40 °C Non-operating up to 90% relative humidity (non-condensing) at 65 °C
Altitude	Operating up to 4000 meters (13,000 ft) Non-operating up to 15300 meters (50,000 ft)

Extra notes regarding 16860A Series:

1. Pollution degree 2
2. Installation category II
3. These instruments are intended for use in an indoor lab environment

Ordering Information

A complete logic analysis system includes the logic analyzer, probes, optional application software and accessories. Use the information on the following pages to configure a portable logic analysis system.

16860A Series portable logic analyzer

The base configuration of each 16860A Series logic analyzer includes 350 MHz state, 2.5 GHz timing (full channel) and 2 Mb memory depth standard.

Configuring a logic analyzer to meet your application needs and budget is as easy as 1, 2, 3.

1. Select a channel count to determine the model number. Once the model number is determined, use the entries in that column for the remaining configuration selections.
2. Select the desired state and timing speeds. Note: 10 GHz quarter channel timing mode is available on the 16862A and 16864A models only.
3. Select the memory depth. Memory depth is defaulted to 2 Mb if no selection is made.

Model	16861A	16862A	16863A	16864A
Channels				
Channels	34	68	102	136
State speed				
350 MHz	Standard	Standard	Standard	Standard
700 MHz	16861A-700	16862A-700	16863A-700	16864A-700
Timing speed (quarter channel mode)				
10 GHz	–	16862A-T10 ¹	–	16864A-T10 ¹
Memory depth				
2 Mb	Standard	Standard	Standard	Standard
4 Mb	16861A-004	16862A-004	16863A-004	16864A-004
8 Mb	16861A-008	16862A-008	16863A-008	16864A-008
16 Mb	16861A-016	16862A-016	16863A-016	16864A-016
32 Mb	16861A-032	16862A-032	16863A-032	16864A-032
64 Mb	16861A-064	16862A-064	16863A-064	16864A-064
128 Mb	16861A-128	16862A-128	16863A-128	16864A-128

1. Option 16862A-T10 requires 16862A-700. Option 16864A-T10 requires 16864A-700.

Each 16860 Series logic analyzer includes the following:

- USB keyboard
- USB mouse
- Accessory bag
- Power cord



16860A Series Probing Options

Logic analyzer probes are required and ordered separately. Please specify probes when ordering to ensure the correct connection between the logic analyzer and the device under test.

Consider the following when determining how you'll connect to the DUT. For more detailed information on probing options, please refer to the Probing Solutions for Logic Analyzers data sheet (pub number: 5968-4632E).

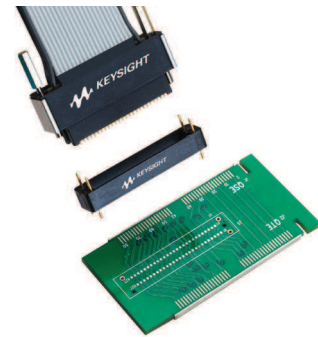
Flying lead probes

Measure individual signals physically far apart or located where a probe connector hasn't been designed in. A wide variety of accessories provide the flexibility to connect to IC pins, traces, pads, vias and any signal that resides on the surface of the board.



Soft Touch connectorless probes

Soft Touch connectorless probes ensure signal quality with < 0.7 pF of capacitive loading. They are compatible with all surface finishes, including lead-free. The probe requires a soft touch footprint designed into your target system.



Connector probes - Samtec

This high-performance connector solution supports data rates up to 1.5 Gb/s. The probe requires a 100-pin Samtec connector designed into your target system.



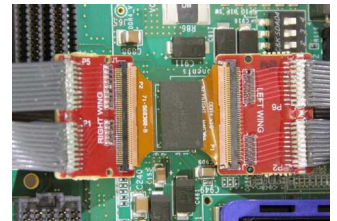
Connector probes - Mictor

This reliable and cost-effective connector solution supports data rates up to 600 Mb/s. Mictor probes require a 38-pin Mictor connector designed into your target system.



DDR/LPDDR BGA probes

BGA probes work in existing designs and eliminate the need for up front planning or re-design. BGA probes allow you to get signal access to the DDR/LPDDR signals, connecting directly to the balls of the DRAM, enabling you to operate at full speed and acquire high-speed signals without impacting the performance of your design.



ZIF probes

ZIF probes provide convenient and reliable connection between the BGA probe wings and the U4201A cable that connects to the logic analyzer.



16860A Series Probing Options (Continued)

Direct connect and 90-pin probing options

There are two styles of general purpose probes compatible with 16860A Series logic analyzers: direct connect probes and 90-pin probes. Direct connect probes connect directly to the DUT and the 160-pin connector of the logic analyzer.

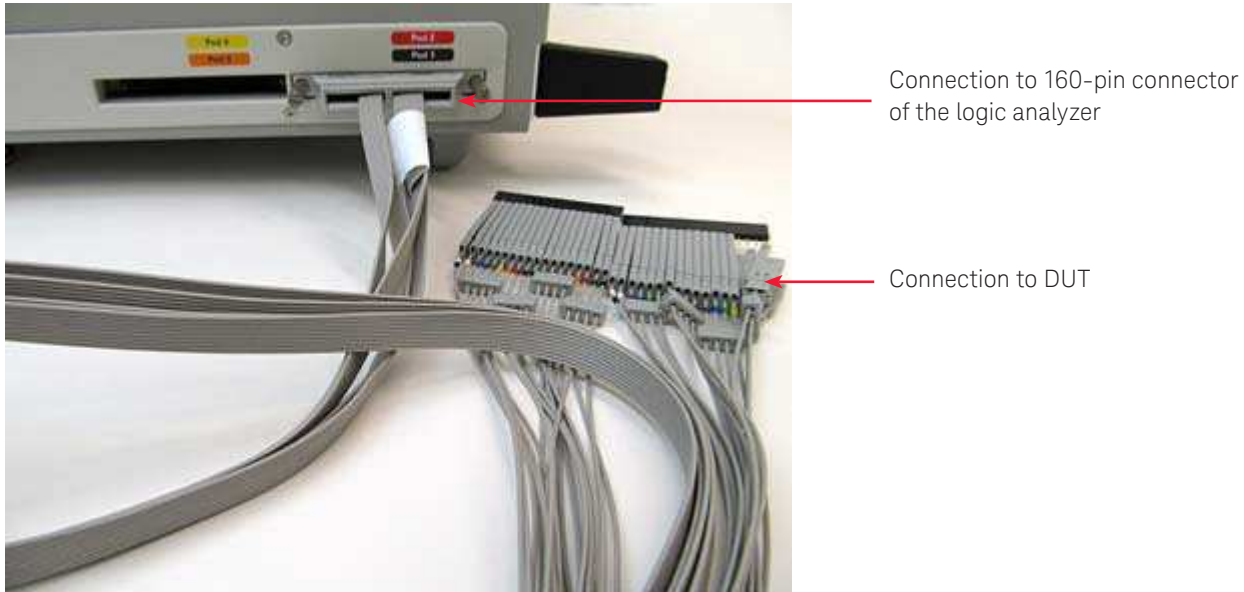


Figure 2. U4203A direct connect flying lead probe connected to a logic analyzer.

90-pin probes require a U4201A logic analyzer cable between the 90-pin probe connector and the connector of the logic analyzer.

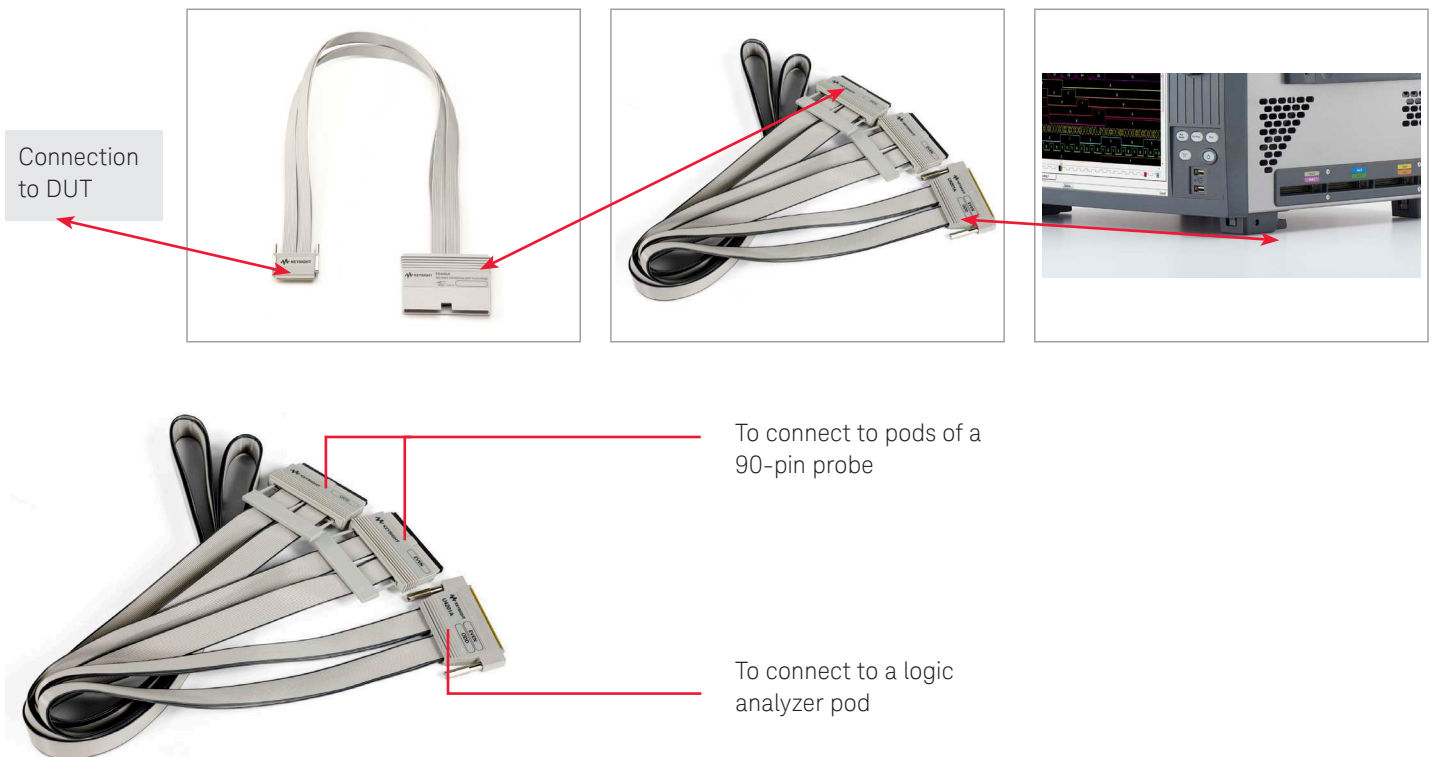


Figure 3. U4201A logic analyzer cable.

16860A Series Probing Options (Continued)

Direct connect probes

Probe type	Number of channels, signal support for clock and data	Order
Flying lead	34-channel, single-ended data, differential clock	U4203A
Soft Touch Pro	34-channel, single-ended data, differential clock	U4204A
Mictor	34-channel, single-ended data, single-ended clock	U4205A
Soft Touch Pro	34 channel, single-ended data, single-ended clock (used for quarter channel timing applications)	U4206A

90-pin probes for use with U4201A logic analyzer cables

The following logic analyzer probes require a U4201A cable to connect to. The maximum number of U4201A cables per 16860A series logic analyzers is:

- 16861A: 1
- 16862A: 2
- 16863A: 3
- 16864A: 4

Probe type	Number of channels, signal support for clock and data	Uses one or both of a U4201A cable's pod connections	Order
Flying lead	17 channel, differential data, differential clock	One	E5381B
Flying lead	17 channel, single-ended data, differential clock	One	E5382B
Soft Touch pro	17 channel, differential data, differential clock	One	E5405B
Soft Touch pro	17 channel, single-ended data, differential clock	Both	E5406A
Samtec	17 channel, differential data, differential clock	One	E5379A
Mictor	34 channel, single-ended data, single-ended clock	Both	E5380B

16860A Series Probing Options (Continued)

DDR/LPDDR interposers and probes

The following provides a high-level overview of memory probing components and 16860A Series logic analyzer compatibility. To ensure you order the correct quantity and combination of components for your specific DDR/LPDDR implementation, refer to the data sheet for a specific component for more detailed information. The following include 16860A Series configuration files for easy setup. Refer to page 5 for logic analyzer state speed option requirements.

DRAMs, DIMMs and SO-DIMMs operating at ≤ 1400 MT/s					
Form factor	Signal access ¹	Requires component, qty	16860A Series compatibility		
			16862A ²	16863A ²	16864A
x4/x8, 78-ball	Command, Address, Control and Data ¹	– W3633A BGA interposer, 1 – E5847A ZIF probe, 1 – U4201A cable, 2	√	√	√
x16, 96-ball, stacked die under 2G	Command, Address, Control and Data ¹	– W3631A BGA interposer, 1 – E5845A ZIF probe, 1 – U4201A cable, 2	√	√	√
x16, 96-ball, non-stacked die, all depths	Command, Address, Control and Data ¹	– W3636A BGA interposer, 1 – E5845A ZIF probe, 1 – U4201A cable, 3	√ ² No data	√	√
DIMM					
240-pin DDR3 SDRAM DIMM	Command, Address, Control and Partial Data ¹	– FS2352B DIMM interposer, 1 – U4201A cable, 4	√ ²	√ ²	√
240-pin DDR3 SDRAM DIMM	Command, Address, Control (No data)	– FS2372 DIMM interposer, 1 – U4201A cable, 4	√	√	√
SO-DIMM					
240-pin DDR3 SDRAM SO-DIMM	Command, Address, Control and Partial Data ¹	– FS2354 DIMM interposer, 1 – Cables connection to logic analyzer included standard with interposer	√ ²	√ ²	√
240-pin DDR3 SDRAM SO-DIMM	Command, Address, Control (No data)	– FS2374 SO-DIMM interposer, 1 – U4201A cable, 4	√ ²	√ ²	√

1. Refer to the data sheet for a given interposer for information on specific signal access.
2. The required U4201A cables may be more than what a given 16860A Series logic analyzer will support. If the number of U4201A cables is more than what the analyzer supports, some signals will not be available for that model. The maximum number of U4201A cables per analyzer are two for the 16862A, three for the 16863A and four for the 16864A.

Add-in Application Software

If you request the email delivery option, you will be sent an electronic copy of the Entitlement Certificate so you can redeem your license and begin using the software, often on the same day.

Order the appropriate option number for the desired application and license type you order.

- **Fixed perpetual license** - The license is locked to the PC where the software operates.
- **Floating/server perpetual license** - The license is locked to a license server from which the software automatically checks out the necessary licenses. Licenses are checked back into the server once your analysis session is terminated.
- **Transportable perpetual license** - The license is locked to the PC where the software operates, however the license can be moved. The deletion from one host PC is confirmed prior to issuing a license for another host PC.

Model number	Add-in application software	Ordering information		
		Fixed license	Floating/server license	Transportable license
B4601C	Serial-to-parallel analysis package	B4601C-010	B4601C-020	
B4602A	Signal extractor tool	B4602A-010	B4602A-020	
B4610A	Data import package	B4610A-010	B4610A-020	
B4655A	FPGA dynamic probe application software for Xilinx	B4655A-011	B4655A-012	
B4656A	FPGA dynamic probe application software for Altera	B4656A-010	B4656A-020	
B4661A	Memory analysis software for logic analyzers			
	DDR decoder with physical address trigger tool	B4661A-1FP	B4661A-1NP	B4661A-1TP
	LPDDR decoder	B4661A-2FP	B4661A-2NP	B4661A-2TP
	DDR and LPDDR compliance violation analysis	B4661A-3FP	B4661A-3NP	B4661A-3TP
	DDR3/4 and LPDDR2/3/4 performance analysis	B4661A-4FP	B4661A-4NP	B4661A-4TP
89601B	Digital Vector Signal Analysis software, hardware connectivity for logic analyzers			89601B-300

Floating/server license count provided with each purchase of the floating/server license product-option. Each use of the application uses a single count of the floating/server license. Purchase the quantity of the product-option to cover the maximum simultaneous use of the application.

Product-option	Count =
B4601C-020	1
B4602A-020	2
B4610A-020	1
B4655A-012	1
B4656A-020	1
B4661A-1NP	2
B4661A-2NP	4
B4661A-3NP	4
B4661A-4NP	4

Accessories

Model number	Description
E5867A	Additional 1686X removable hard drive assembly, includes 256 GB or greater SSD (imaged with operating system and logic analyzer software)

After-purchase upgrades

Buy what you need today and upgrade in the future. The 16860A Series logic analyzer's state speed, timing speed and memory depth can be independently upgraded. When ordering, if you request the email delivery option, you will be sent an electronic copy of the Entitlement Certificate so you can redeem your license and begin using the upgraded capability, often on the same day.

For model	16861A	16862A	16863A	16864A
Channels	34	68	102	136
State speed				
700 MHz	16861AU-700	16862AU-700	16863AU-700	16864AU-700
Timing speed (quarter channel mode)				
10 GHz	–	16862AU-T10 ¹	–	16864AU-T10 ²
Memory depth				
4 Mb	16861AU-004	16862AU-004	16863AU-004	16864AU-004
8 Mb	16861AU-008	16862AU-008	16863AU-008	16864AU-008
16 Mb	16861AU-016	16862AU-016	16863AU-016	16864AU-016
32 Mb	16861AU-032	16862AU-032	16863AU-032	16864AU-032
64 Mb	16861AU-064	16862AU-064	16863AU-064	16864AU-064
128 Mb	16861AU-128	16862AU-128	16863AU-128	16864AU-128

1. 16862AU-T10 upgrade requires that the 16862A already have 16862A-700 installed or that a 16862AU-700 upgrade license is also purchased with 16862AU-T10.
2. 16864AU-T10 upgrade requires that the 16864A already have 16864AU-700 installed or that a 16864AU-700 upgrade license is also purchased with 16864AU-T10.

Related literature

Publication title	Publication number
Probing Solutions for Logic Analyzers - Data Sheet	5968-4632E
B4655A FPGA Dynamic Probe for Xilinx - Data Sheet	5989-0423EN
B4656A FPGA Dynamic Probe for Altera - Data Sheet	5989-5595EN
B4661A Memory Analysis Software for Logic Analyzers - Data Sheet	5992-0984EN
W3630A Series DDR3 BGA Probes for Logic Analyzers and Oscilloscopes - Data Sheet	5990-3179EN



www.axistandard.org

AdvancedTCA® Extensions for Instrumentation and Test (AXIe) is an open standard that extends the AdvancedTCA for general purpose and semiconductor test. The business that became Keysight was a founding member of the AXIe consortium. ATCA®, AdvancedTCA®, and the ATCA logo are registered US trademarks of the PCI Industrial Computer Manufacturers Group.



www.lxistandard.org

LAN eXtensions for Instruments puts the power of Ethernet and the Web inside your test systems. The business that became Keysight was a founding member of the LXI consortium.



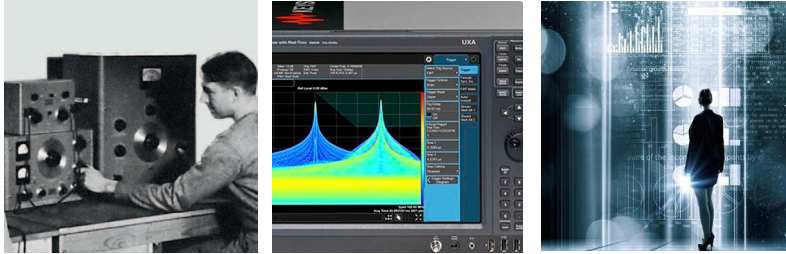
www.pxisa.org

PCI eXtensions for Instrumentation (PXI) modular instrumentation delivers a rugged, PC-based high-performance measurement and automation system.

Evolving Since 1939

Our unique combination of hardware, software, services, and people can help you reach your next breakthrough. We are unlocking the future of technology.

From Hewlett-Packard to Agilent to Keysight.



For more information on Keysight Technologies' products, applications or services, please contact your local Keysight office. The complete list is available at: www.keysight.com/find/contactus

Americas

Canada	(877) 894 4414
Brazil	55 11 3351 7010
Mexico	001 800 254 2440
United States	(800) 829 4444

Asia Pacific

Australia	1 800 629 485
China	800 810 0189
Hong Kong	800 938 693
India	1 800 11 2626
Japan	0120 (421) 345
Korea	080 769 0800
Malaysia	1 800 888 848
Singapore	1 800 375 8100
Taiwan	0800 047 866
Other AP Countries	(65) 6375 8100

Europe & Middle East

Austria	0800 001122
Belgium	0800 58580
Finland	0800 523252
France	0805 980333
Germany	0800 6270999
Ireland	1800 832700
Israel	1 809 343051
Italy	800 599100
Luxembourg	+32 800 58580
Netherlands	0800 0233200
Russia	8800 5009286
Spain	800 000154
Sweden	0200 882255
Switzerland	0800 805353
	Opt. 1 (DE)
	Opt. 2 (FR)
	Opt. 3 (IT)
United Kingdom	0800 0260637

For other unlisted countries: www.keysight.com/find/contactus (BP-9-7-17)

DEKRA Certified
ISO 9001 Quality Management System

www.keysight.com/go/quality
Keysight Technologies, Inc.
DEKRA Certified ISO 9001:2015
Quality Management System

myKeysight

myKeysight

www.keysight.com/find/mykeysight

A personalized view into the information most relevant to you.

http://www.keysight.com/find/emt_product_registration

Register your products to get up-to-date product information and find warranty information.

KEYSIGHT SERVICES

Accelerate Technology Adoption.
Lower costs.

Keysight Services

www.keysight.com/find/service

Keysight Services can help from acquisition to renewal across your instrument's lifecycle. Our comprehensive service offerings—one-stop calibration, repair, asset management, technology refresh, consulting, training and more—helps you improve product quality and lower costs.



Keysight Assurance Plans

www.keysight.com/find/AssurancePlans

Up to ten years of protection and no budgetary surprises to ensure your instruments are operating to specification, so you can rely on accurate measurements.

Keysight Channel Partners

www.keysight.com/find/channelpartners

Get the best of both worlds: Keysight's measurement expertise and product breadth, combined with channel partner convenience.

www.keysight.com/find/16861A



Unlocking Measurement Insights

This information is subject to change without notice.
© Keysight Technologies, 2017
Published in USA, December 1, 2017
5992-1723EN
www.keysight.com